

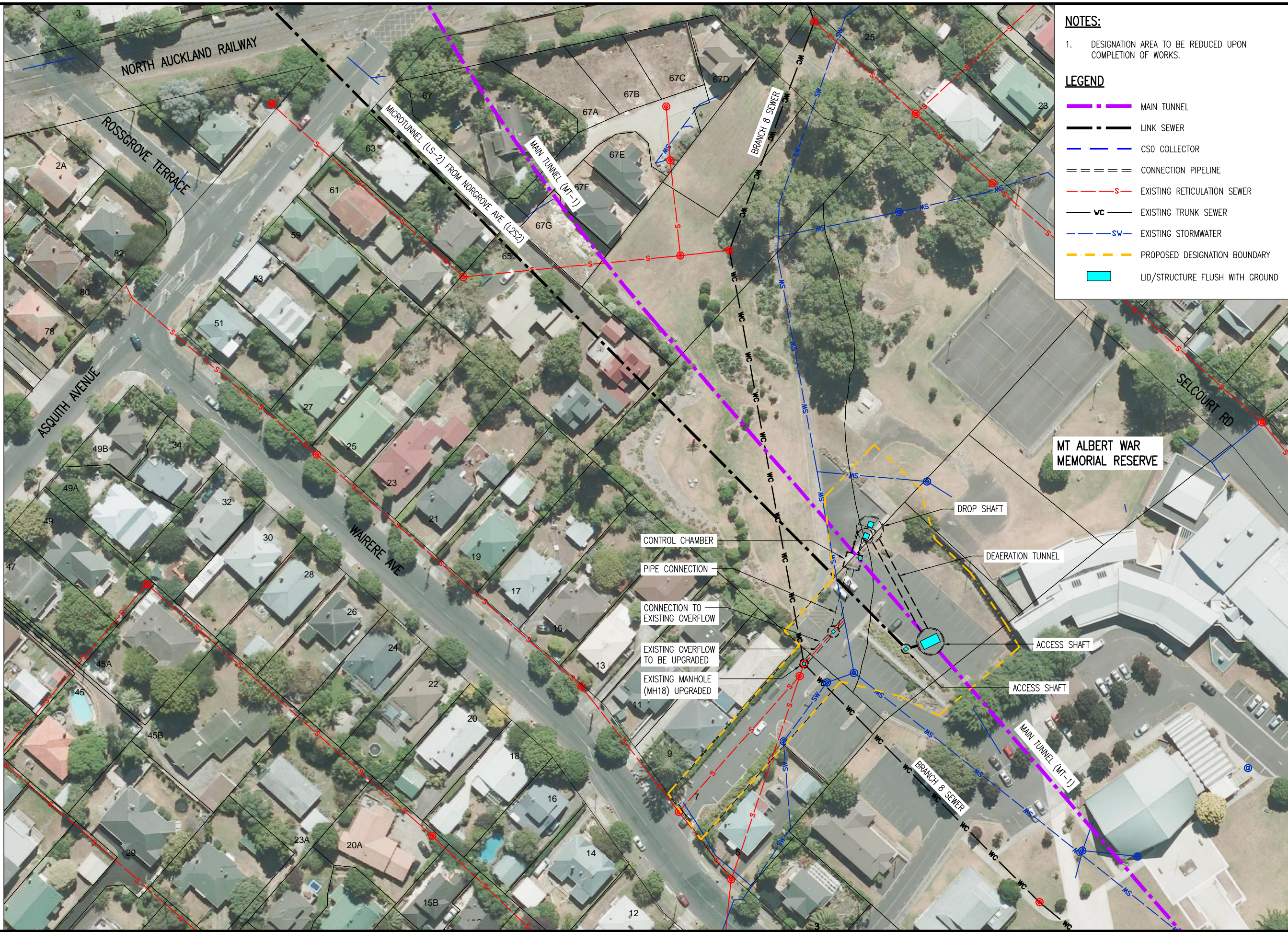


NOTES:

- DESIGNATION AREA TO BE REDUCED UPON COMPLETION OF WORKS.

LEGEND

- MAIN TUNNEL
- LINK SEWER
- CSO COLLECTOR
- CONNECTION PIPELINE
- EXISTING RETICULATION SEWER
- EXISTING TRUNK SEWER
- EXISTING STORMWATER
- PROPOSED DESIGNATION BOUNDARY
- LID/STRUCTURE FLUSH WITH GROUND



Plot Date: 11-Jul-13 11:13 a.m.
 File path: P:\0538 - Central Interceptor\04_Drawings\4.3_Working\AEE_Main_Concept\General\DWG

ISSUE	DATE	AMENDMENT	BY	APPD.	BY	DATE
D	12/07/13	ADDRESS NUMBERS ADDED	AP	JQC	AP	
C	14/05/13	CONSENT ISSUE (CONTROL CHAMBER RELOCATED)	AP	JQC	NL	
B	01/03/13	CONSENT ISSUE	AP	PR	JS	
A	-	DRAFT	AP	PR	CC	

DESIGNED	DES. CHECKED	DRAWN	DWG. CHECKED	REV'D P.MGR	APP'D P.DIR
NL	JS	AP	NL	JS	CC

OPERATIONS

ASSET MANAGER

AEE JULY 2013

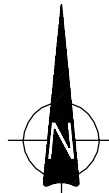
waterCare
services limited

COPYRIGHT - This drawing, the design and concept, remain the exclusive property of WaterCare Services Limited and may not be used without approval. Copyright reserved.

**CENTRAL INTERCEPTOR
GENERAL**

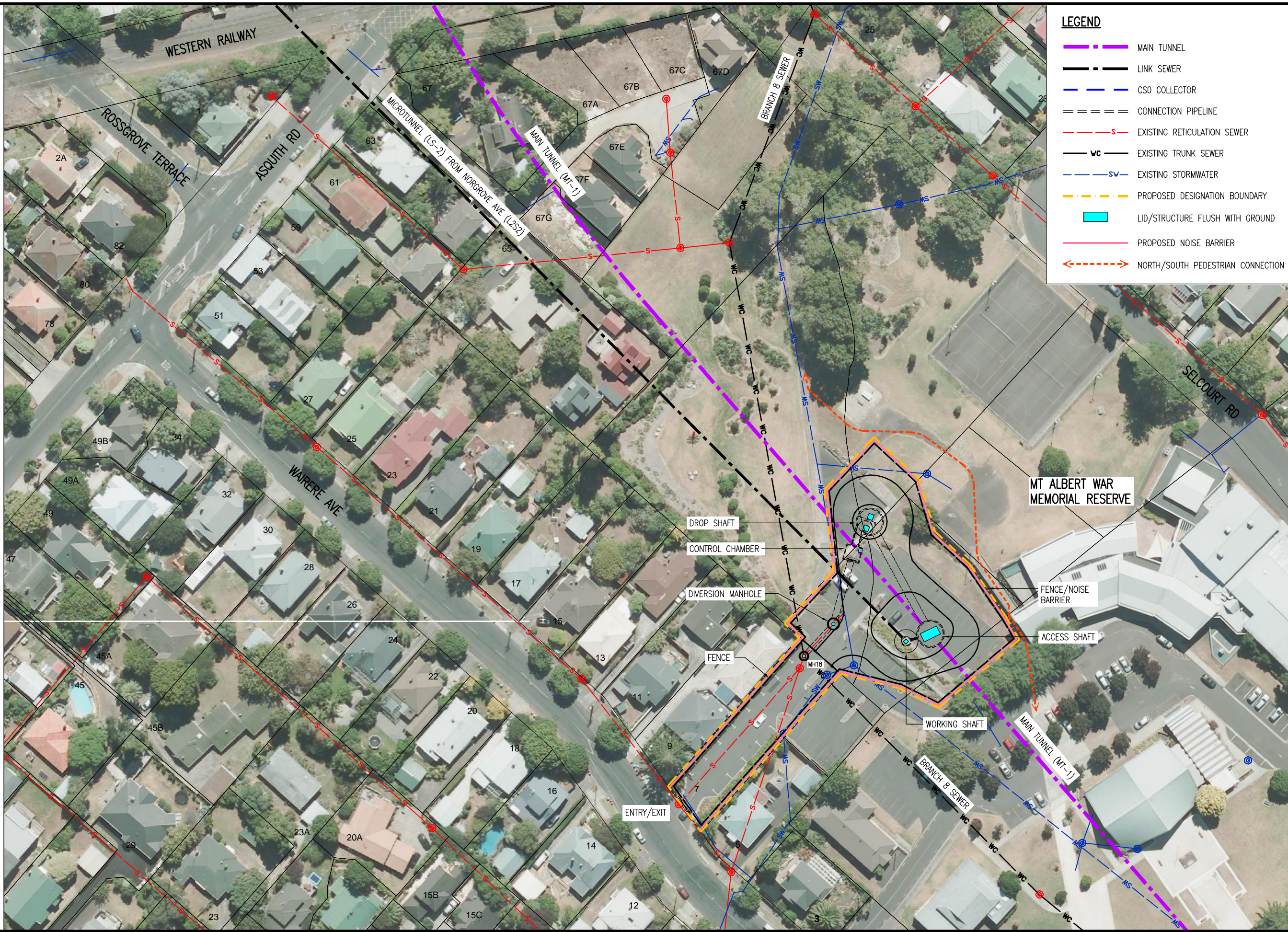
MT ALBERT WAR MEMORIAL RESERVE CAR PARK - PERMANENT WORKS PLAN

CAD FILE AEE-MAIN-2.1A_D	DATE 11-Jul-13
ORIGINAL SCALE A1	CONTRACT No. 0538
1:1000 A3	
DRAWING No. AEE-MAIN-2.1A	ISSUE D



LEGEND

- MAIN TUNNEL
- LINK SEWER
- CSO COLLECTOR
- CONNECTION PIPELINE
- EXISTING RETICULATION SEWER
- WC EXISTING TRUNK SEWER
- SW EXISTING STORMWATER
- PROPOSED DESIGNATION BOUNDARY
- LID/STRUCTURE FLUSH WITH GROUND
- PROPOSED NOISE BARRIER
- NORTH/SOUTH PEDESTRIAN CONNECTION



Plot Date: 11-Jul-13 11:14 a.m.
 File path: P:\0538 - Central Interceptor\04_Drawings\4.3_Working\AEE_Main_Concentrator\04g

ISSUE	DATE	AMENDMENT	BY	APPD.	DATE
E	12/07/13	ADDRESS NUMBERS ADDED	AP	JQC	
D	14/05/13	CONSENT ISSUE (CONTROL CHAMBER RELOCATED)	AP	JQC	
C	14/04/13	CONSENT ISSUE - PEDESTRIAN CONNECTION ADDED	AP	JQC	
B	01/03/13	CONSENT ISSUE	AP	PR	
A	-	DRAFT	AP	PR	

DESIGNED	NL	OPERATIONS
DES. CHECKED	JS	
DRAWN	AP	
DWG. CHECKED	NL	
REV'D P.MGR	JS	
APP'D P.DIR	CC	

AE E JULY 2013

COPYRIGHT - This drawing, the design and concept, remain the exclusive property of WaterCare Services Limited and may not be used without approval Copyright reserved.

CENTRAL INTERCEPTOR
GENERAL
 MT ALBERT WAR MEMORIAL RESERVE CAR PARK - CONSTRUCTION WORKS PLAN

CAD FILE AEE-MAIN-2.2A_E	DATE 11-Jul-13
ORIGINAL SCALE A1	CONTRACT No. 0538
1:1000 A3	
DRAWING No. AEE-MAIN-2.2A	ISSUE E



Looking west from the Recreation Centre access ramp



Looking east towards the Recreation Centre



Looking west from the carpark by the basketball half-court



Looking north from the south-east corner of the car park



A08301A_620_ASI_Mt_Albert_War_Memorial_Reserve_Carpark_revC.dgn



Note: Site layout indicative only. Final layout dependant on Construction Management Plan



Note: Site layout indicative only. Final layout dependant on Site Reinstatement Plan



Monday, 17 June 2013 1:12:02 p.m. 0 20mm@A3

REV	DATE	DRN	CHK	DESCRIPTION
1	26.02.13			Sourced from Watercare - AEE-MAIN-2 2A.pdf

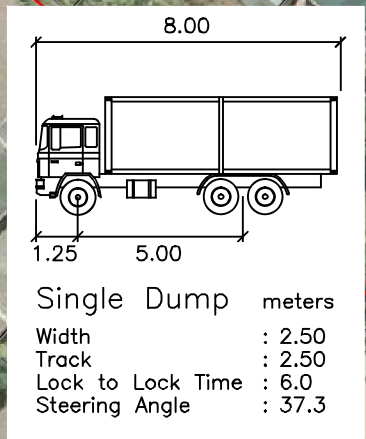
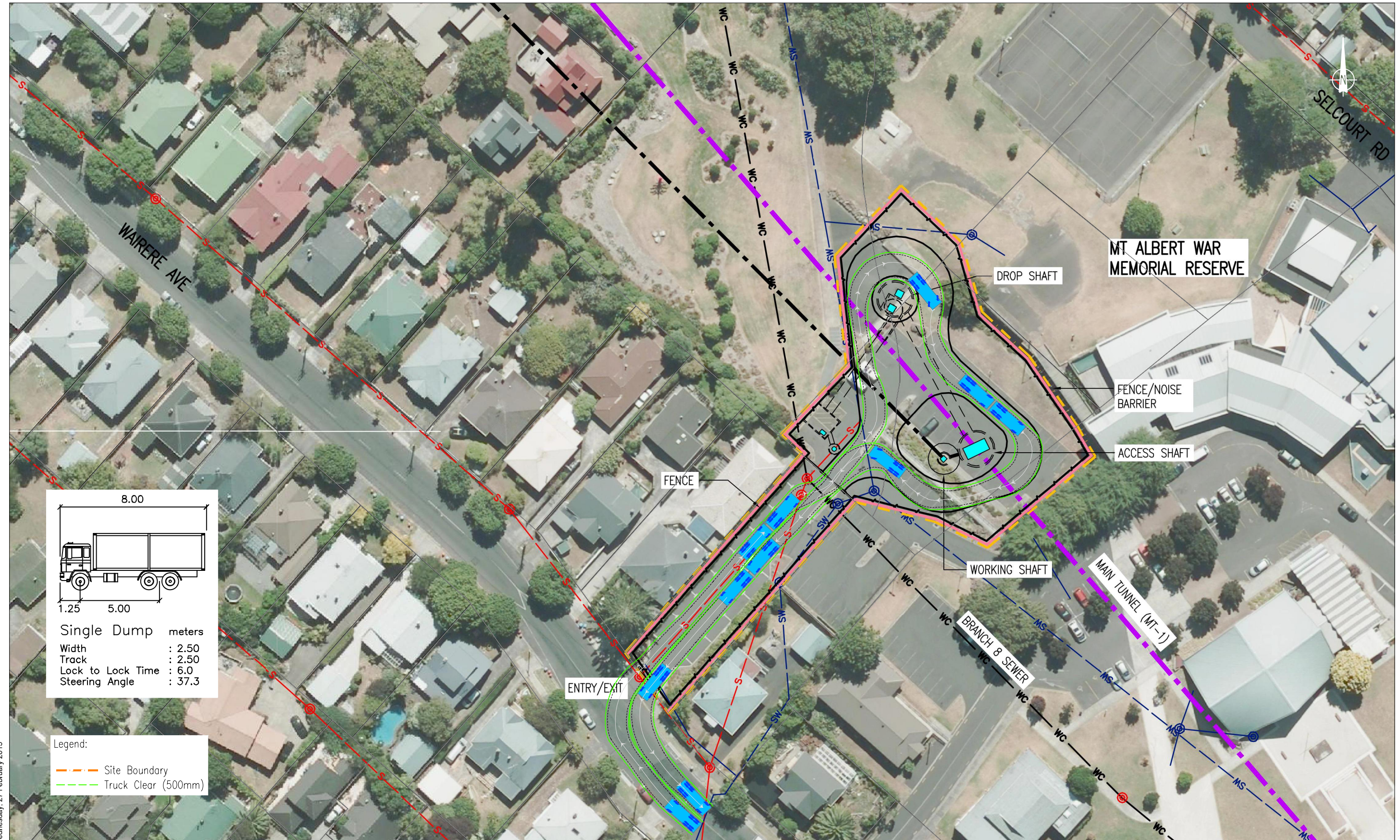
WATERCARE CENTRAL INTERCEPTOR
MT ALBERT WAR MEMORIAL RESERVE CAR PARK (AS1) - SITE LOCATION



DRAWN: SP	--	--
DATE: 21/06/13	STATUS: --	
SCALE: 1:2,000@A3		
DWG NO:11117A64A		



1d



Legend:
 - - - Site Boundary
 - - - Truck Clear (500mm)

Wednesday, 27 February 2013

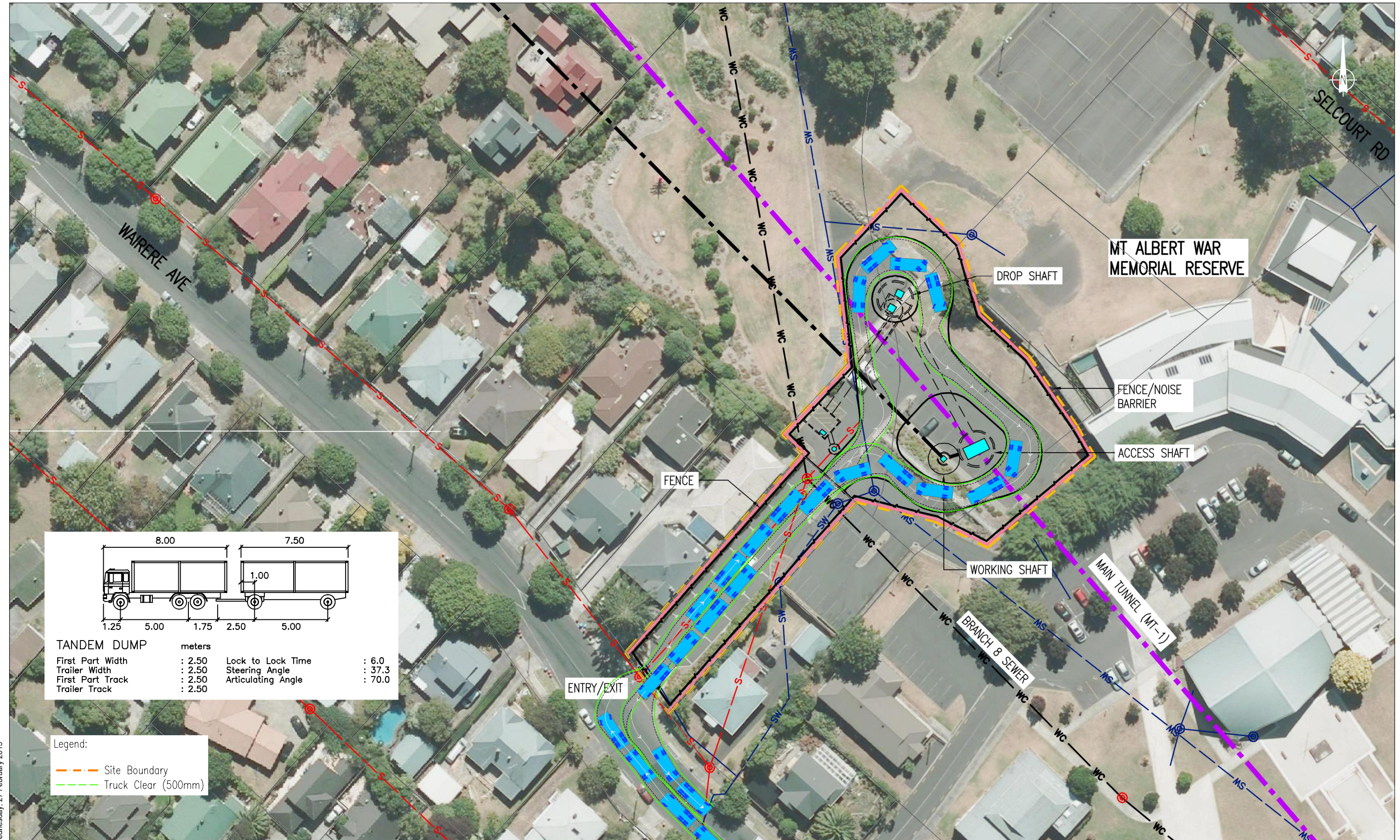
REVISION	DATE	DESCRIPTION
-	15.02.2013	Sourced from Watercare - AEE-MAIN-2 2A_2 120213.pdf
A	26.02.2013	Sourced from Watercare - AEE-MAIN-2 2A.pdf

Watercare Central Interceptor
Mt Albert War Memorial Reserve Car Park (AS1) - Truck Tracking

DRAWN: SP
 DATE: 27/02/2013
 SCALE: 1:750@A3
 DWG NO:1117A48E



1a



Wednesday, 27 February 2013

REVISION	DATE	DESCRIPTION
—	15.02.2013	Sourced from Watercare - AEE-MAIN-2 2A_2 120213.pdf
A	26.02.2013	Sourced from Watercare - AEE-MAIN-2 2A.pdf

Watercare Central Interceptor
Mt Albert War Memorial Reserve Car Park (AS1) - Truck Tracking

waterCare
 services limited

DRAWN: SP
 DATE: 27/02/2013
 SCALE: 1:750@A3
 DWG NO:1117A48E

Traffic Design Group

1b



Friday, 19 April 2013

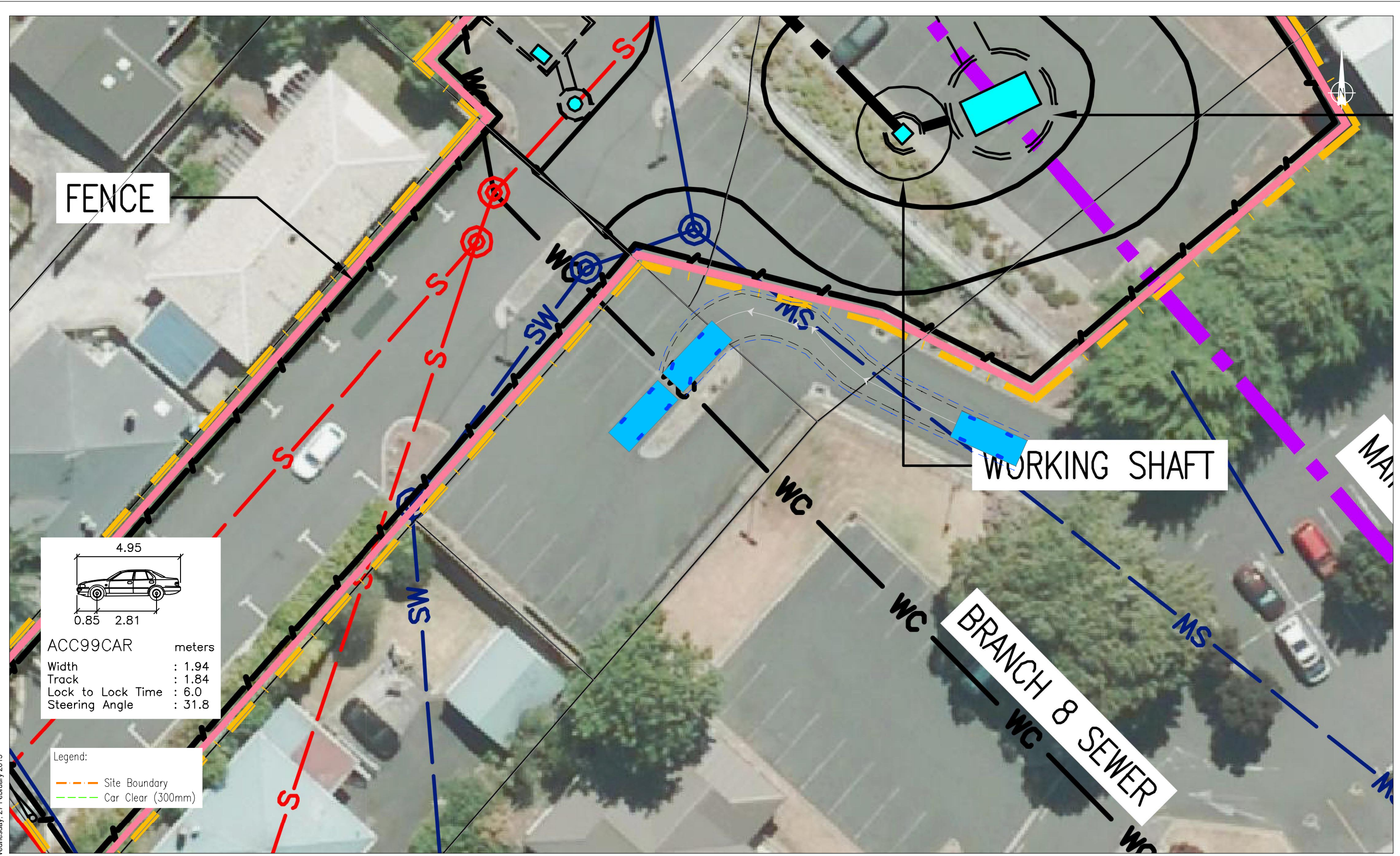
REVISION	DATE	DESCRIPTION
—	05.06.2012	Sourced from Watercare - AEE-MAIN-1.3.dwg
—	—	—
—	—	—
—	—	—
—	—	—
—	—	—

Watercare Central Interceptor - Mt Albert War Memorial Reserve
Potential Additional Car Parks

DRAWN: SP
 DATE: 04/04/2013
 SCALE: 1:600@A3
 DWG NO:11117A62A



1c



Wednesday, 27 February 2013

4.95
0.85 2.81

ACC99CAR meters
 Width : 1.94
 Track : 1.84
 Lock to Lock Time : 6.0
 Steering Angle : 31.8

- Legend:
- Site Boundary
 - Car Clear (300mm)

REVISION	DATE	DESCRIPTION
—	15.02.2013	Sourced from Watercare - AEE-MAIN-2 2A_2 120213.pdf
A	26.02.2013	Sourced from Watercare - AEE-MAIN-2 2A.pdf

Watercare Central Interceptor
 Mt Albert War Memorial Reserve Car Park (AS1) - Car Tracking



DRAWN: SP
 DATE: 27/02/2013
 SCALE: 1:250@A3
 DWG NO:11117A48E



J:\11100-49\11117\Drawings\11117A48e.dwg

